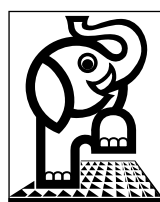


Albertslund Nord, Denmark

Architect: WITRAZ arkitekter



elefant riste
- the original...

Elefant Gratings Ltd.



Project:	Albertslund Nord Denmark
Year of delivery:	Currently awaiting planning approval
Gratings m ² :	Potentially 3000 m ² once refurbishment is completed
Purpose:	Window shutters
Type:	Ventilation gratings With bars louvred at 45°
Material:	Aluminium
Finish:	Self colour
Mesh:	55x99 mm
Bars:	30x3 mm - bearing bars 80x3 mm - louvred 45°
Edge bars:	35x35x3 mm angle plate
Note:	We have supplied 2 panels on a trial basis awaiting planning approval.



elefant riste
- the original...

Elefant Gratings Ltd.

Chafford Learning Campus, England

Architect: Nicholas Hare Architects



elefant[®] riste
- the original...

Elefant Gratings Ltd.



Project:	Chafford Learning Campus Thurrock Essex, England
Year of delivery:	2001
Gratings m ² :	App. 300 m ²
Purpose:	Brise Soleil
Type:	Type N
Material:	Steel 37-2
Finish:	Galvanized
Mesh:	75x30 mm
Bars:	50x2 mm
Edge bars:	50x3 mm on 4 sides

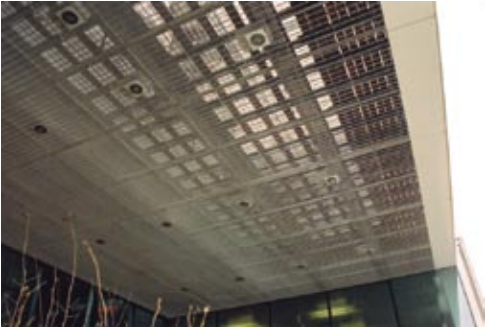


elefant riste
- the original...

Elefant Gratings Ltd.

FIH A/S Office Building, Denmark

Architect: 3xNielsen

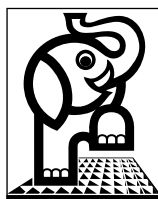


elefant riste
- the original...

Elefant Gratings Ltd.



Project:	FIH A/S Office Building Copenhagen, Denmark
Year of delivery:	2001
Gratings m ² :	App. 500 m ²
Purpose:	Canopy, Ceiling grilles above patio and Gratings for the floor
Type:	Type N & NP
Material:	Steel 37-2
Finish:	Canopy: Galvanized Floor: Galvanized Ceiling: Galvanized and Powder coated to Ral 9010
Mesh:	90x25 mm for all gratings
Bars:	Canopy: 50x2 mm Bearing bars 30x2 mm Control bars Floor: 25x2 mm Ceiling: 20x2 mm
Edge bars:	Canopy: 30x3 mm on 2 sides 50x3 mm on 2 sides Floor: 25x3 mm on 4 sides Ceiling: 30x3 mm on 4 sides

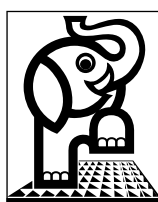
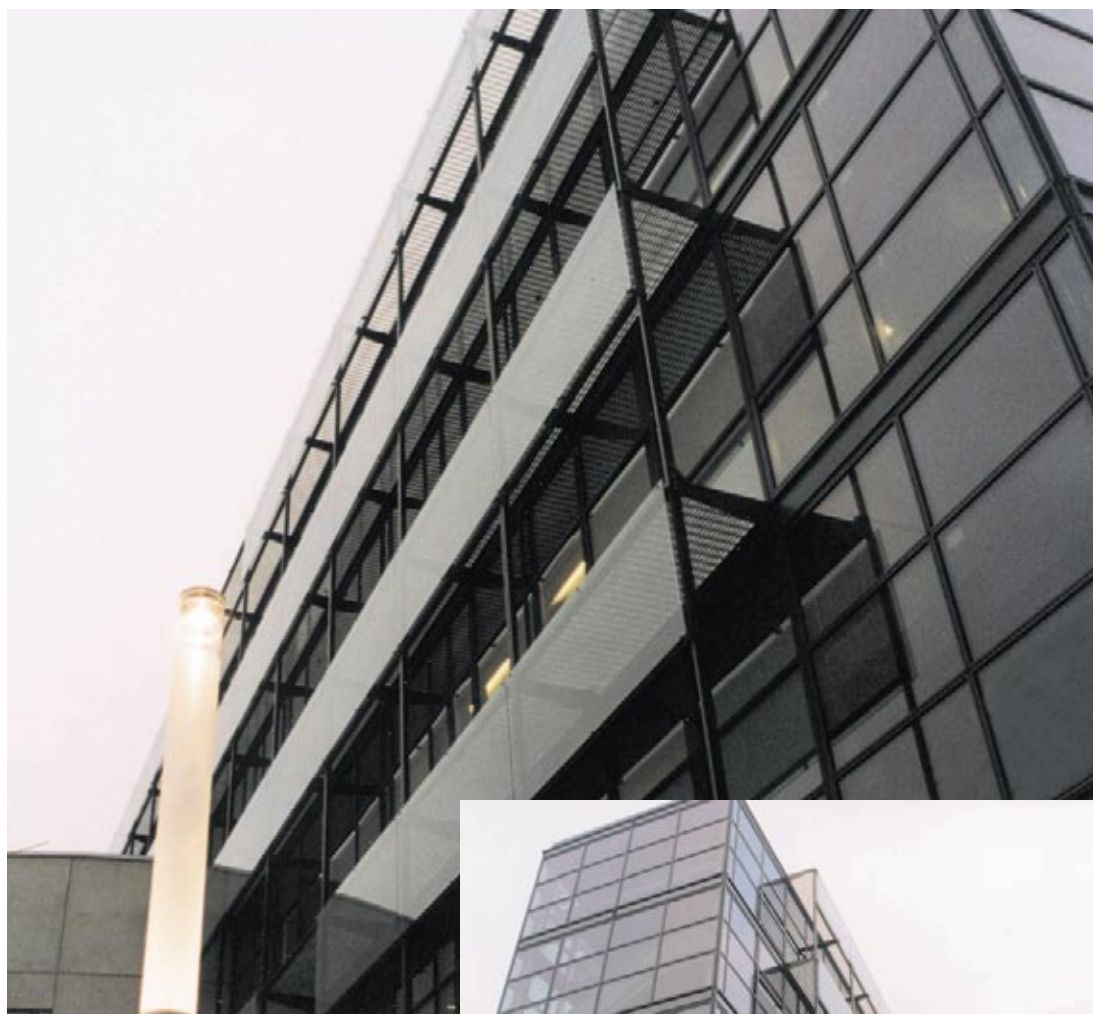


elefant riste
- the original...

Elefant Gratings Ltd.

Handelshøjskolen København, Denmark

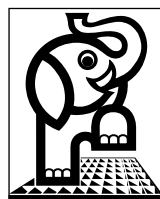
Architect: Vilhelm Lauritzen A/S, Copenhagen



elefant riste
- the original...

Elefant Gratings Ltd.

Project:	Handelshøjskolen København Copenhagen, Denmark
Year of delivery:	1999
Gratings m ² :	400 m ²
Purpose:	Sunscreening/gangway for maintenance
Type:	Type SP
Material:	Steel 37-2
Finish:	Galvanized
Mesh:	100x37 mm
Bars:	50x2 mm
Edge bars:	50x3 mm



elefant riste
- the original...

Elefant Gratings Ltd.

KPMG, Denmark

Architect: C.C. Contractor A/S, Herning
and Architect Bent Moesby, Holstebro

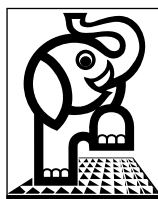


elefant riste
- the original...

Elefant Gratings Ltd.



Project:	KPMG, Office Building Herning, Denmark
Year of delivery:	1999
Gratings m ² :	50 m ²
Purpose:	Sunscreening
Type:	Type N
Material:	Steel 37-2
Finish:	Galvanized and powder coated to Ral 9007 with gloss 77
Mesh:	50x50 mm
Bars:	60x2 mm
Edge bars:	60x60x5 mm RHS profil - on 4 sides
Note:	The gratings are welded together two and two.

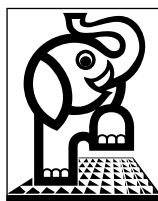


elefant riste
- the original...

Elefant Gratings Ltd.

WM Data, Denmark

Architect: C.F. Møllers Tegnastue, Copenhagen



elefant riste
- the original...

Elefant Gratings Ltd.



Project: WM Data
Ballerup, Denmark

Year of delivery: 1999

Gratings m²: App. 160 m²

Purpose: Sunscreening

Type: Type N

Material: Steel 37-2

Finish: Galvanized

Mesh: 50x50 mm

Bars: 50x2 mm

Edge bars: 50x3 & 25x3 mm

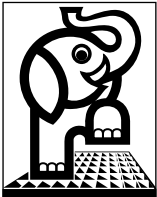


elefant riste
- the original...

Elefant Gratings Ltd.

Flintholm Station, Denmark

Architect: KHR Arkitekter AS



elefant riste
- the original...

Elefant Gratings Ltd.



Project:	Flintholm Station Copenhagen, Denmark
Year of delivery:	2003
Gratings m ² :	60 m ²
Purpose:	Sunscreening & Maintenance walkways
Type:	Type SP
Material:	Stainless Steel - BS EN 1.4301
Finish:	Chemically Cleaned
Mesh:	100x40 mm
Bars:	60x3 mm
Edge bars:	60x5 mm - on 4 sides



elefant riste
- the original...

Elefant Gratings Ltd.

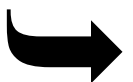
Crimp, Denmark

Architect: Tegnestuen Vandkunsten, Copenhagen



elefant® riste
- the original...

Elefant Gratings Ltd.



Project:	Crimp Allerød, Denmark
Year of delivery:	1999
Gratings m ² :	430 m ²
Purpose:	Gangway for maintenance and gratings for cladding
Type:	Type N
Material:	Steel 37-2
Finish:	Galvanized
Mesh:	30x30 mm
Bars:	30x2 mm
Edge bars:	30x3 mm - on 4 sides
Note:	Furthermore we have supplied gratings for hat shelves, shoe shelves, wall partitions and stair treads and landings for straightway stairs between the maintenance gangways.

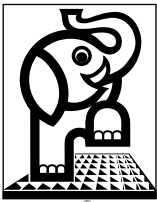


elefant riste
- the original...

Elefant Gratings Ltd.

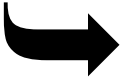
Roskilde Universitetscenter, Denmark

Architect: Henning Larsens Tegnestue, Copenhagen



- the original...

Elefant Gratings Ltd.



Project:	Roskilde Universitetscenter Roskilde, Denmark
Year of delivery:	2000-2001
Grating m ² :	60 m ²
Purpose:	Gangway for maintenance
Type:	Type SP
Material:	Steel 37-2
Finish:	Galvanized
Mesh:	20x30 mm
Bars:	20x2 mm
Edge bars:	120x5 mm - on 4 sides

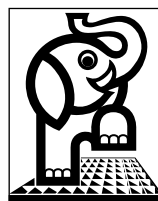


elefant riste
- the original...

Elefant Gratings Ltd.

Triton Square 2-3, London

Architect: Sheppard Robson

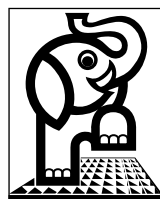


elefant® riste
- the original...

Elefant Gratings Ltd.



Project:	2-3 Triton Square London N1, England
Year of delivery:	2000
Gratings m ² :	320 m ²
Purpose:	Gangway for maintenance
Type:	Type SP
Material:	Steel 37-2
Finish:	Galvanized
Mesh:	60x30 mm
Bars:	60x2 mm
Edge bars:	60x3 mm - on 4 sides
Note:	Photos have been taken prior to exterior glazing being fitted.



elefant riste
- the original...

Elefant Gratings Ltd.