

BBC White City, London

Architect: Allies & Morrison

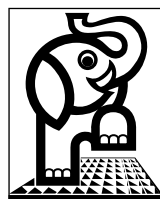


elefant riste
- the original...

Elefant Gratings Ltd.



Project:	BBC White City London
Year of delivery:	2003
Gratings m ² :	App. 610 m ²
Purpose:	Horizontal ventilation grilles
Type:	Type NP - placed upside down
Material:	Steel 37-2
Finish:	Galvanised
Mesh:	60x20 mm - centre to centre of bars
Bearing bars:	40x2 mm
Controller bars:	25x2 mm
Edge bars:	40x3 mm - on 4 sides



elefant riste
- the original...

Elefant Gratings Ltd.

Guinness HQ, England

Architect: RHWL



elefant riste
- the original...

Elefant Gratings Ltd.



Project: Guinness HQ
Park Royal, London, England

Year of delivery: 2002

Gratings m²: App. 230 m²

Purpose: Horizontal Ventilation Grilles for
Underground Car Park

Type: Type NP

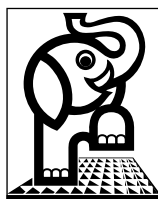
Material: Steel 37-2

Finish: Galvanized

Mesh: Type 1: 25x50 mm
Type 2: 30x60 mm

Bars: Type 1: 30x2 mm bearing bars
Type 2: 60x2 mm bearing bars
30x2 mm control bars

Edge bars: Type 1: 30x3 mm on 4 sides
Type 2: 60x3 mm on 4 sides



elefant riste
- the original...

Elefant Gratings Ltd.

Metro, Denmark

Architect: KHR Arkitekter AS



elefant riste
- the original...

Elefant Gratings Ltd.



Project: Metro
Copenhagen, Denmark

Year of delivery: 2002

Gratings m²: App. 300 m²
- gratings for several stations

Purpose: Ceiling and floor in ventilation
Glasshouses & Horizontal ventilation grilles

Type: Type NP - placed downside-up

Material: AISI 316 - Stainless Steel acid-proof

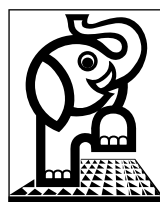
Finish: Chemically cleaned

Mesh: 56x28 mm Center-center bars

Bars: 60x3 mm - bearing bars
30x3 mm - control bars

Edge bars: 30x3 mm - on 2 short sides

Note: The surface on all bearing bars are burnished
with gain 80-120.



elefant[®] riste
- the original...

Elefant Gratings Ltd.

Metro, Denmark

Architect: KHR Arkitekter AS

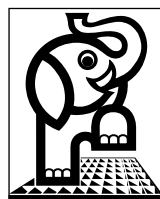


elefant riste
- the original...

Elefant Gratings Ltd.



Project:	Metro Copenhagen, Denmark
Year of delivery:	2002
Gratings m ² :	App. 95 m ² - gratings for several stations
Purpose:	Horizontal ventilation grilles for Underground Metro
Type:	Type SP - placed downside-up
Material:	Steel 37-2
Finish:	Galvanized
Mesh:	56x28 mm
Bars:	120x5 mm
Edge bars:	No edge bars



elefant riste
- the original...

Elefant Gratings Ltd.

Ferry Quay, Brentford, Middlesex

Architect: Clarke Associates, London

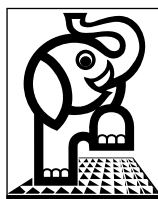


elefant riste
- the original...

Elefant Gratings Ltd.



Project:	Ferry Quay, Brentford, Middlesex, England Phase 1
Year of delivery:	2001
Gratings m ² :	App. 320 m ²
Purpose:	Horizontal Ventilation Grilles for Underground car park
Type:	Type SP
Material:	Steel 37-2
Finish:	Galvanized Syntha Pulvin Polyester Powder Coated to RAL 7015
Mesh:	15x30 mm
Bars:	40x2 mm
Edge bars:	40x3 mm - on 4 sides



elefant riste
- the original...

Elefant Gratings Ltd.

The City Quay, London

Architect: Hurley Robertson & Associates, London



elefant riste
- the original...

Elefant Gratings Ltd.



Project: The City Quay, St. Katherines Dock,
London, England

Year of delivery: 1999

Gratings m²: App. 600 m²

Purpose: Cover above underground parking

Type: Type SP

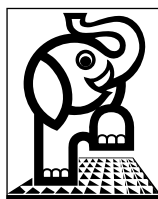
Material: Steel 37-2

Finish: Galvanized & Powder coated

Mesh: 100x30 mm

Bars: Bearing bars: 60x3 mm
Control- filler bars: 40x3 mm

Edge bars: 60x6 mm - on 4 sides

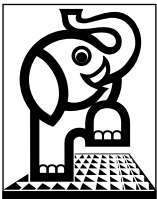


elefant riste
- the original...

Elefant Gratings Ltd.

Odense Universitet, Denmark

Architect: Cubo Arkitekter A/S, Aarhus



elefant riste
- the original...

Elefant Gratings Ltd.



Project: Odense Universitet
Odense, Denmark

Year of delivery: 2000-2001

Gratings m²: App. 40 m²

Purpose: Gratings above heating systems
- gulley gratings

Type: Type N

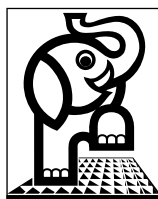
Material: AISI 316

Finish: Barrel cleaning

Mesh: Type 1: 40x20 mm
Type 2: 30x15 mm

Bars: Type 1: 30x3 mm
Type 2: 25x3 mm

Edge bars: Type 1: 30x3 & 35x3 mm
Type 2: 25x3 mm

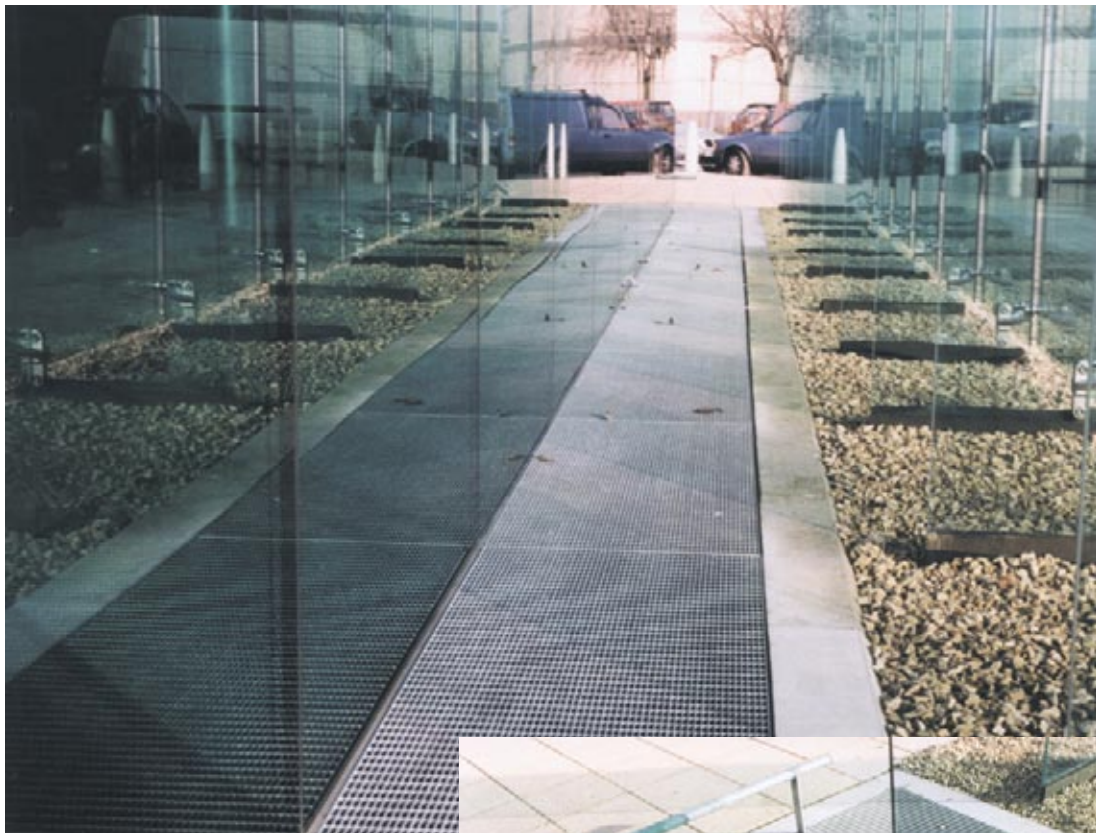


elefant riste
- the original...

Elefant Gratings Ltd.

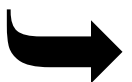
World of Glass, St. Helens, Lancashire

Architect: Geoffrey Reid Associates



elefant riste
- the original...

Elefant Gratings Ltd.



Project: World of Glass
St. Helens, Lancashire
England

Year of delivery: 1999

Gratings m²: 160 m²

Purpose: Gratings around building - inside and
outside glasswalls

Inside function:
Gratings above heating systems
- gullies

Outside function:
Outlet grates

Type: Type SP

Material: Steel 37-2

Finish: Galvanized

Mesh: 9x30 mm

Bars: 30x2 mm

Edge bars: 30x3 mm - on 4 sides



elefant[®] riste
- the original...

Elefant Gratings Ltd.

Farum Arena, Denmark

Architect: Europlan Aps, Copenhagen



elefant[®] riste
- the original...

Elefant Gratings Ltd.



Project:	Farum Arena Farum, Denmark
Year of delivery:	2000
Grating m ² :	90 m ²
Purpose:	Grilles for light shafts
Type:	Type SP
Material:	Steel 37-2
Finish:	Galvanized
Mesh:	30x30 mm
Bars:	40x3 mm
Edge bars:	40x3 mm - on 4 sides
Note:	Furthermore we have supplied scraper gratings, gratings for canopies, stair treads and landings.



elefant riste
- the original...

Elefant Gratings Ltd.