

# U.C.C. Bioscience Research Institute, Ireland

Architect: Murray O'Laoire Architects



**elefant riste**  
*- the original...*

**Elefant Gratings Ltd.**



Project: U.C.C. Bioscience Research Institute  
Cork, Ireland

Year of delivery: 2002

Gratings m<sup>2</sup>: App. 11 m<sup>2</sup>

Purpose: Scraper gratings outside entrance foyer

Type: Type SP

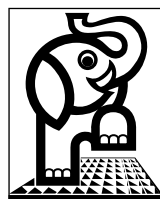
Material: Steel 37-2

Finish: Galvanized

Mesh: 9x30 mm

Bars: 30x2 mm

Edge bars: 30x3 mm on 4 sides



**elefant riste**  
*- the original...*

**Elefant Gratings Ltd.**

# Bruun's Gallery, Denmark

Architect: Centrumtegnestuen, Århus



elefant riste  
- the original...

Elefant Gratings Ltd.



Project:	Bruun's Gallery - Citycenter Århus, Denmark
Year of delivery:	2003
Gratings m <sup>2</sup> :	100 m <sup>2</sup>
Purpose:	Entrance mat
Type:	Type SP
Material:	Steel 37-2
Finish:	Galvanised
Mesh:	20x20 mm
Bars:	45x2 mm
Edge bars:	45x3.5 mm - on 4 sides
Note:	Frames and gratings have been tailored to fit revolving doors



**elefant riste**  
- the original...

**Elefant Gratings Ltd.**

# Citroën Head Office, Denmark

Architect: Aarhus Arkitekter, Copenhagen



elefant riste  
- the original...

Elefant Gratings Ltd.



Project: Citroën Head Office  
Copenhagen, Denmark

Year of delivery: 2003

Gratings m<sup>2</sup>: App. 85 m<sup>2</sup>

Purpose: Gratings for exhibition area

Type: Type SP

Material: Steel 37-2

Finish: Galvanised and powder coated to  
RAL 7024

Mesh: 30x30 mm

Bars: 50x2 mm

Edge bars: 50x3 mm - on 4 sides

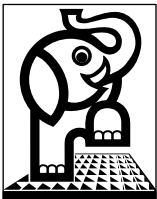


**elefant riste**  
- the original...

**Elefant Gratings Ltd.**

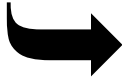
# Danish Design Center, Denmark

Architect: Henning Larsens Tegnesteue, Copenhagen



elefant riste  
- the original...

Elefant Gratings Ltd.



Project:	Danish Design Center Copenhagen, Denmark
Year of delivery:	1999
Gratings m <sup>2</sup> :	150 m <sup>2</sup>
Purpose:	Platform for foot traffic on roof
Type:	Type SP
Material:	Steel 37-2
Finish:	Galvanised
Mesh:	20x30 mm
Bars:	25x2 mm
Edge bars:	110x5 mm
Note:	4 6x50x100 mm brackets are welded in each corner of the gratings

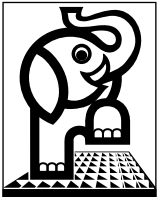


**elefant riste**  
- the original...

**Elefant Gratings Ltd.**

# Handelshøjskolen København, Denmark

Architect: Vilhelm Lauritzen A/S, Copenhagen



**elefant riste**  
*- the original...*

**Elefant Gratings Ltd.**



Project:	Handelshøjskolen København Copenhagen, Denmark
Year of delivery:	1999
Gratings m <sup>2</sup> :	290 m <sup>2</sup>
Purpose:	Platform for foot traffic on roof
Type:	Type N
Material:	Steel 37-2
Finish:	Galvanized
Mesh:	100x40 mm
Bars:	30x2 mm
Edge bars:	30x3 mm - on 4 sides

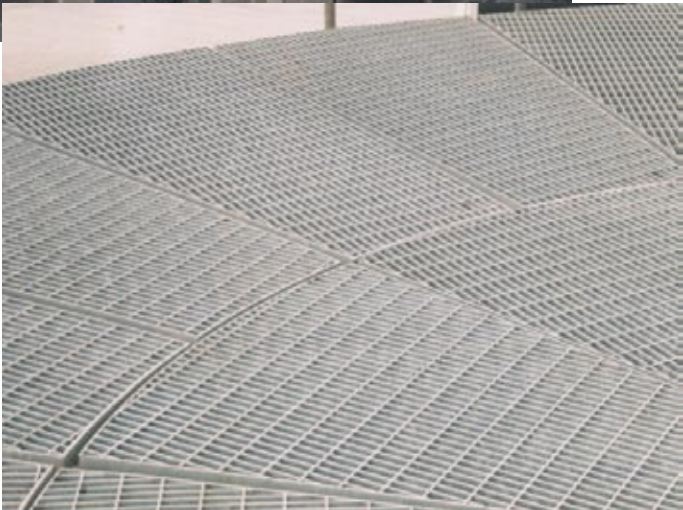


**elefant riste**  
- the original...

**Elefant Gratings Ltd.**

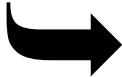
# Sir Rocco Hotel, Cardiff

Architect: Patrick Davies

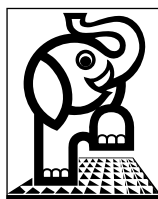


**elefant riste**  
*- the original...*

**Elefant Gratings Ltd.**



Project:	Sir Rocco Hotel Cardiff, England
Year of delivery:	1997
Gratings m <sup>2</sup> :	1600 m <sup>2</sup>
Purpose:	Gratings for balconies
Type:	Type SP
Material:	Steel 37-2
Finish:	Galvanized
Mesh:	75x25 mm
Bars:	30x3 mm
Edge bars:	30x3 mm -on 4 sides
Note:	The gratings form the base of the balconies, and they are covered with wood.



**elefant riste**  
- the original...

**Elefant Gratings Ltd.**

# Griffeen River, Ireland

Architect: URS



Bridge type 1



Bridge type 2

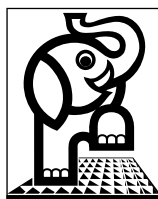


**elefant riste**  
- the original...

**Elefant Gratings Ltd.**



Project:	Griffeen River Dublin, Ireland	
Year of delivery:	2003	
Gratings m <sup>2</sup> :	App. 260 m <sup>2</sup>	
Purpose:	Walkways over Griffeen River	
Material:	Steel 37-2	
Finish:	Galvanized	
Bridge type 1:	Type:	Plank gratings type O2 Welded together
	Thickness:	2 mm
	Height:	45 mm
	Width:	150 mm
	Bearing bars:	40x3 mm
	Note:	With 15 mm return flange
Bridge type 2:	Type:	Type SP
	Mesh:	30x11 mm 11 mm between bearing bars
	Bars:	50x3 mm
	Edge bars:	50x3 mm
	Note:	With 4 fixing plates



**elefant riste**  
- the original...

**Elefant Gratings Ltd.**

# Martin Gruppen A/S, Denmark

Architect: Schmidt, Hammer & Lassen, Aarhus



Photo: Schmidt, Hammer & Lassen, Aarhus

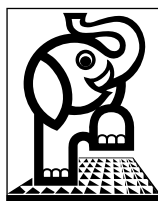


elefant riste  
- the original...

Elefant Gratings Ltd.



Project:	Martin Gruppen A/S Aarhus, Denmark
Year of delivery:	1999
Gratings m <sup>2</sup> :	300 m <sup>2</sup>
Purpose:	Walkway grilles
Type:	Light planks
Material:	Steel 37-2
Finish:	Galvanized
Height:	50 mm
Bend:	10 mm
Width:	248 mm

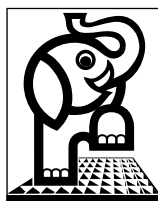


**elefant riste**  
- the original...

**Elefant Gratings Ltd.**

# World of Glass, St. Helens, Lancashire

Architect: Geoffrey Reid Associates



**elefant riste**  
- the original...

**Elefant Gratings Ltd.**



Project:	World of Glass St. Helens, Lancashire, England
Year of delivery:	1999
Gratings m <sup>2</sup> :	160 m <sup>2</sup>
Purpose:	Walkways
Type:	Planks type Firm Grip
Material:	Steel 37
Finish:	Galvanized
Thickness:	3 mm
Height:	85 mm
Width:	210 mm
Bearing bars:	30x3 mm



**elefant riste**  
- the original...

**Elefant Gratings Ltd.**