

Goldsmiths, University of London

Architect: Alsop & Partners



elefant riste
- the original...

Elefant Gratings Ltd.



Project: Ben Pimlott Building
Goldsmiths, University of London

Year of delivery: 2004

Gratings m²: App. 70 m²

Purpose: Balustrade infills

Type: Type N

Material: Steel 37-2

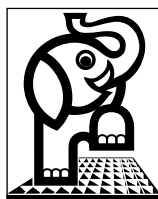
Finish: Galvanised

Mesh: 60x130 mm - centres

Bars: 25x3 mm

Edge bars: 25x3 mm - on 4 sides

Note: Fabricated and rolled to radius as two pieces then weled together as one to suit handrail shape.

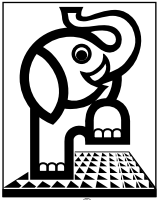
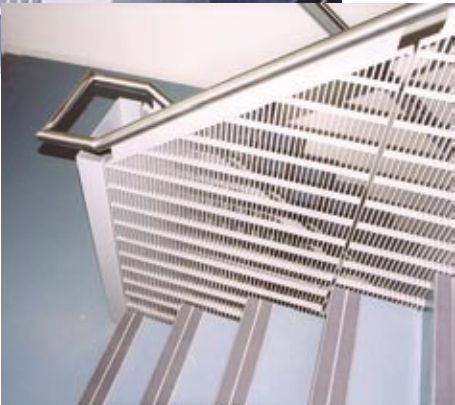


elefant riste
- the original...

Elefant Gratings Ltd.

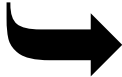
BBC White City, London

Architect: Allies & Morrison



elefant riste
- the original...

Elefant Gratings Ltd.



Project:	BBC White City London
Year of delivery:	2003
Gratings m ² :	App. 1150 m ²
Purpose:	Balustrade infills
Type:	Type N
Material:	Steel 37-2
Finish:	Supplied galvanised - polished and powder coated by customer
Mesh:	90x15 mm - centre to centre of bars
Bars:	25x3 mm
Edge bars:	25x3 mm - on 4 sides



elefant riste
- the original...

Elefant Gratings Ltd.

Shoeburyness High School, England

Architect: Southend Borough Council



elefant[®] riste
- the original...

Elefant Gratings Ltd.



Project: Shoeburyness High School
England

Year of delivery: 2002

Gratings m²: App. 670 m²
- hereby 480 m² ventilation gratings

Purpose: Type 1: Brise Soleil and Balustrade infills
Type 2: Gangways and stair treads

Type: Type 1: Ventilation gratings
With bars louvred 45°
Type 2: Type SP

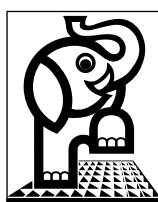
Material: Steel 37-2

Finish: Galvanized

Mesh: Type 1: 20x60 mm
20 mm between horizontal bars
60 mm between vertical bars
Type 2: 30x11.11 center-center bars

Bars: Type 1: 30x2 mm - vertical bars
40x2 mm - horizontal bars
Type 2: 30x2 mm

Edge bars: Type 1: 30x3 mm - 4 sides
Type 2: 30x3 mm 4 sides



elefant riste
- the original...

Elefant Gratings Ltd.

Citroën Head Office, Denmark

Architect: Aarhus Arkitekter, Copenhagen



elefant riste
- the original...

Elefant Gratings Ltd.



Project:	Citroën Head Office Copenhagen, Denmark
Year of delivery:	2003
Gratings m ² :	App. 280 m ²
Purpose:	Balustrade infills
Type:	Type N
Material:	Steel 37-2
Finish:	Galvanised and powder coated to DC384 mp
Mesh:	30x30 mm
Bearing bars:	25x2 mm
Edge bars:	25x3 mm - on 4 sides
Note:	With 4 slots per grating for mounting.

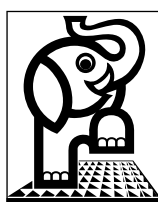
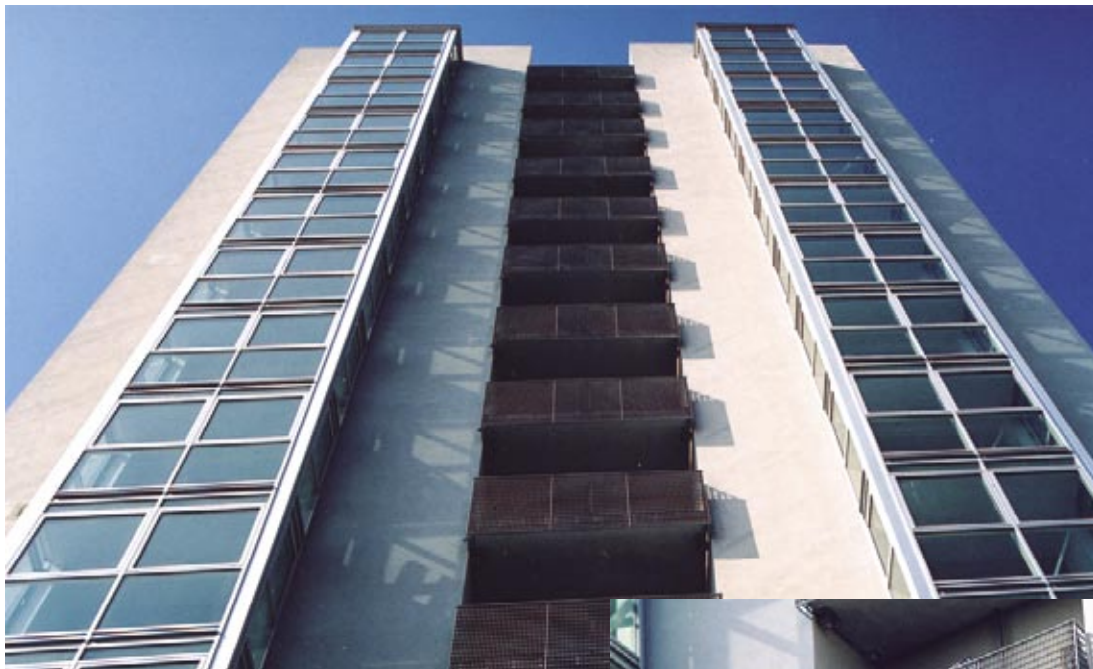


elefant riste
- the original...

Elefant Gratings Ltd.

Wennberg Siloen, Denmark

Architect: Tage Lyneborg, Copenhagen



elefant riste
- the original...

Elefant Gratings Ltd.



Project: Wennberg Siloen
Copenhagen, Denmark

Year of delivery: 2003

Gratings m²: 290 m²

Purpose: Balustrade infills

Type: Type N

Material: Steel 37-2

Finish: Galvanised

Mesh: 87x37 mm

Bars: 30x3 mm

Edge bars: 30x3 mm - on 2 sides
30x5 mm - on 2 sides

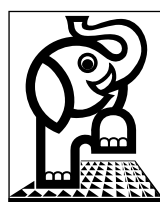


elefant riste
- the original...

Elefant Gratings Ltd.

Trim Castle, Ireland

Architect: Office of Public Works/Cloonan O'Donnel



elefant riste
- the original...

Elefant Gratings Ltd.



Project:	Trim Castle Co. Meath, Ireland
Year of delivery:	1999
Gratings m ² :	App. 210 m ²
Purpose:	Balustrade infills
Type:	Type N
Material:	Steel 37-2
Finish:	Galvanized
Mesh:	70x70 mm
Bars:	30x3 mm
Edge bars:	60x5 mm
Topbars:	75x12 mm
Note:	With angel 80x80x8 mm welded on the edge bars.

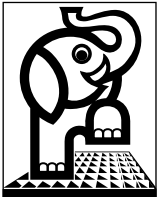


elefant riste
- the original...

Elefant Gratings Ltd.

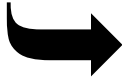
Shepherdess Walk, London

Architect: Child Graddon & Lewis



elefant riste
- the original...

Elefant Gratings Ltd.



Project: Shepherdess Walk
London N1, England

Year of delivery: 1999

Gratings m²: 115 m²

Purpose: Balustrade infills

Type: Type SP

Material: Steel 37-2

Finish: Galvanized

Mesh: 45x45 mm

Bars: Bearing bars: 30x2 mm
Control-/filler bars: 20x2 mm

Edge bars: 30x3 mm - on 4 sides

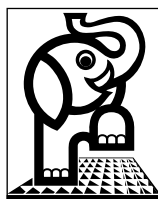


elefant riste
- the original...

Elefant Gratings Ltd.

The Pavillion, Ireland

Architect: Scott Tallon Walker



elefant riste
- the original...

Elefant Gratings Ltd.



Project:	The Pavillion Dublin, Ireland
Year of delivery:	1999-2000
Gratings m ² :	App. 730 m ²
Purpose:	Balustrade infills
Type:	Type N
Material:	Steel 37-2
Finish:	Gratings supplied galvanized, Powder coated finish by others
Mesh:	30x30 mm
Bars:	30x2 mm
Edge bars:	30x5 mm - on 4 sides



elefant riste
- the original...

Elefant Gratings Ltd.

Liberty House, Ireland

Architect: Gardiner Dublin

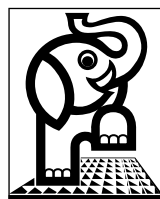


elephant riste
- the original...

Elefant Gratings Ltd.



Project:	Liberty House Dublin, Ireland
Year of delivery:	1999-2000
Gratings m ² :	135 m ²
Purpose:	Balustrade infills
Type:	Type N
Material:	Steel 37-2
Finish:	Gratings supplied self-colour, Powder coated finish by others.
Mesh:	40x40 mm
Bars:	25x3 mm
Edge bars:	25x3 mm - on 4 sides



elefant riste
- the original...

Elefant Gratings Ltd.