

Station Terminal, Denmark



elefant riste
- the original...

Elefant Gratings Ltd.



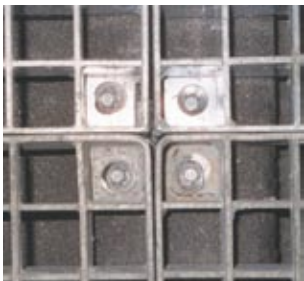
Project:	Station Terminal, Kastrup Airport Copenhagen, Denmark
Year of delivery:	1997
Gratings m ² :	App. 160 m ²
Purpose:	Ramp for underground parking
Type:	Type SP
Material:	Steel 37-2
Finish:	Galvanized
Mesh:	45x30 mm
Bars:	60x3 mm
Edge bars:	60x3 mm - on 4 sides
Note:	With serrated bearing- and controller bars



elefant riste
- the original...

Elefant Gratings Ltd.

Hotel Hilton, Denmark



elefant riste
- the original...

Elefant Gratings Ltd.



Project:	Hotel Hilton, Kastrup Airport Copenhagen, Denmark
Year of delivery:	2001
Grating m ² :	270 m ²
Purpose:	Access ramp - Underground parking
Type:	Type SP
Material:	Steel 37-2
Finish:	Galvanized
Mesh:	30x30 mm
Bars:	50x3 mm
Edge bars:	50x3 mm
Note:	90° ramp with cut outs, where radius is part of the edge bars.



elefant riste
- the original...

Elefant Gratings Ltd.

John Grooms Hospice, Borehamwood



elefant[®] riste
- the original...

Elefant Gratings Ltd.



Project:	John Grooms Hospice Borehamwood, England
Year of delivery:	2000
Gratings m ² :	45 m ²
Purpose:	Disabled access ramp
Type:	Type SP
Material:	Steel 37-2
Finish:	Galvanized
Mesh:	30x9 mm
Bars:	30x2 mm
Edge bars:	30x3 mm - on 4 sides



elefant riste
- the original...

Elefant Gratings Ltd.

Marks & Spencers, Stockley Park, London



elefant[®] riste
- the original...

Elefant Gratings Ltd.



Project:	Marks & Spencers, Stockley Park London, England
Year of delivery:	1999
Gratings m ² :	App. 300 m ²
Purpose:	Approach ramp for parking lot
Type:	Type SP - Serrated in both directions
Material:	Steel 37-2
Finish:	Galvanized
Mesh:	30x30 and 30x25 mm
Bars:	60x3 mm
Edge bars:	60x3 mm - on 4 sides



elefant riste
- the original...

Elefant Gratings Ltd.

Brookfield Court, Bexhill on Sea

Architect: David L Scott



elefant riste
- the original...

Elefant Gratings Ltd.



Project:	Brookfield Court Bexhill on Sea, England	
Year of delivery:	2000	
Gratings m ² :	117 m ²	
Purpose:	Stair treads and landings	
Type:	Type SP	
Material:	Steel 37-2	
Finish:	Galvanized	
Mesh:	15x15 mm	
Bars:	Stair treads:	20x2 mm
	Landings:	30x2 mm
Edge bars:	Stair treads:	50x3 mm - on 4 sides
	Landings:	30x3 mm - on 4 sides

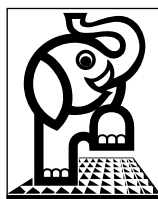


elefant riste
- the original...

Elefant Gratings Ltd.

Textile Conservation Centre, Winchester

Architect: Architecture PLB



elefant riste
- the original...

Elefant Gratings Ltd.



Project:	Textile Conservation Centre Winchester, England
Year of delivery:	1999
Gratings m ² :	50 m ²
Purpose:	Stair treads and landings
Type:	Type SP
Material:	Steel 37-2
Finish:	Galvanized
Mesh:	60x10 mm
Bars:	40x2 mm
Edge bars:	Stair treads: 40x6 mm Landings: 40x3 mm



elefant riste
- the original...

Elefant Gratings Ltd.

88 Wood Street, London

Architect: Richard Rogers Partnership



elefant riste
- the original...

Elefant Gratings Ltd.



Project: 88 Wood Street
London, England

Year of delivery: 1998-1999

Gratings m²: 100 m²

Purpose: Internal Stair

Type: Type Firm Grip

Material: Steel 37-2

Finish: Galvanized

Thickness: 2 mm

Height: 35 mm

Length: 870 mm

Width: 360 mm



elefant riste
- the original...

Elefant Gratings Ltd.

Skolen for Moderne Dans, Denmark

Architect: Erik Brandt Dam, Copenhagen



Photo: Jens Lindhe, Copenhagen



elefant riste
- the original...

Elefant Gratings Ltd.



Project:	Skolen for Moderne Dans Copenhagen, Denmark
Year of delivery:	2000
Gratings m ² :	App. 20 m ²
Purpose:	Staircase
Type:	Type SP
Material:	Steel 37-2
Finish:	Galvanized
Mesh:	60x15 mm
Bars:	20x2 mm
Edge bars:	60x3 mm - on 4 sides
Note:	Further we have supplied gratings for suspended ceiling with built in lights, gratings for outdoor landings, and gratings to place above heating systems (gully gratings)



elefant riste
- the original...

Elefant Gratings Ltd.