

Elefant Gratings Ltd.

Supplier of gratings for

BBC White City



Balustrade grilles

The balustrade grilles were supplied in a galvanized finish to the sub-contractor, who welded a t-section along the top of the grille to facilitate the stainless steel handrail.

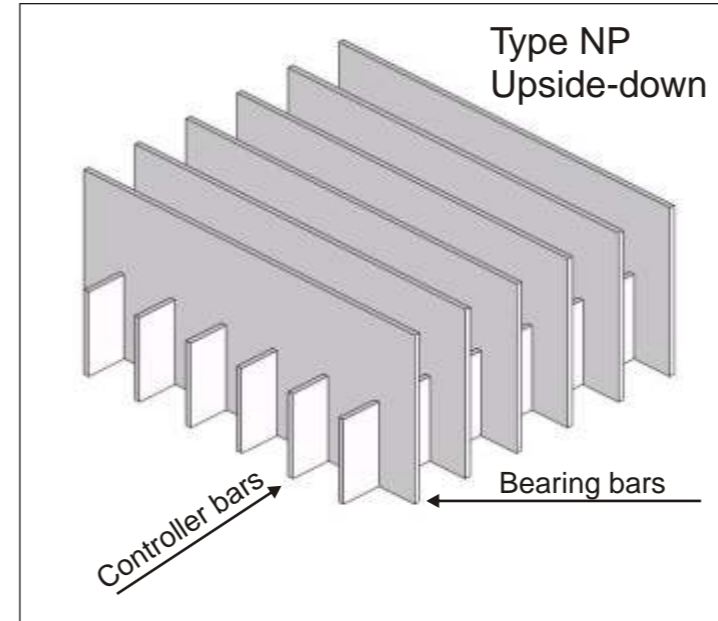
The grilles were all polyester powder coated by the sub-contractor prior to installation.

As each of the twelve staircases differed slightly, every panel had to be individually manufactured. You can see on the photo to the right, the panels being aligned prior to finishing; ensuring each rise is correct.

All panels were manufactured and packed as a separate staircase & rise respectively to enable the sub-contractor to easily identify the panels once delivered.

Technical Specifications

M ² :	1150 m ²
Material:	Steel 37-2
Finish:	Galvanized
Type:	Gratings type N
Mesh:	90x15 mm center to center of bars
Bars:	25x3 mm
Edge bars:	25x3 mm - on 4 sides



Horizontal ventilation grilles

The horizontal ventilation grilles were installed upside down to accentuate the linear effect of the bearing bars. The bars were pitched at the maximum permissible spacing of 20mm in accordance with BS 5395: Part 1; to maximize the free area and minimize the weight of the grilles.

Owing to the number of personnel frequenting this area, the anticipated loading was expected to be quite high; Elephant Gratings Ltd. worked closely with the Architect and designed the grilles to withstand: 4.5KN/300x300mm contact area, based on 1440mm clear span. In accordance with BS6399: Part 1.

Technical Specifications

M ² :	610 m ²
Material:	Steel 37-2
Finish:	Galvanized
Type:	Gratings type NP Placed upside down
Mesh:	60x20 mm center to center of bars
Bars:	40x2 mm
Controller bars:	25x2 mm
Edge bars:	40x3 mm - on 4 sides





Architects comments on the balustrade:

The design criteria for the staircases were to cover up the pre-cast concrete effectively and aesthetically.

Whilst the gratings were being applied on another part of the contract we discussed the possibility of utilizing just the gratings as a balustrade; with no vertical balusters. This was to create a simple two piece design that would achieve a desirable appearance.

By using a close mesh specification we were able to achieve both design and loading requirements effectively.

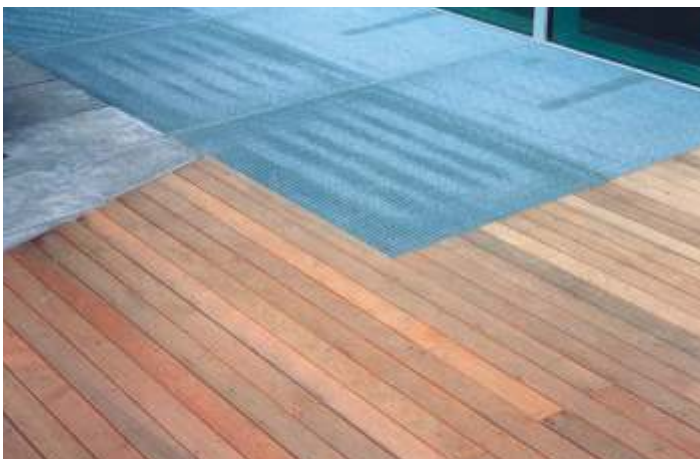
Allies & Morrison

Elefant® gratings for every requirement

ElefantRiste specialize in supplying bespoke grilles for use in many applications, these illustrations are an indication of what is achievable through a close relationship between supplier, designer and installer.

From the initial contact to the final delivery; service and quality are always our goal.

ElefantRiste A/S



7500 Holstebro · Denmark
Tel: +45 9742 6133 · Fax +45 9741 0512
mail@elefantgratings.dk · www.elefantriste.dk

Architect: Allies & Morrison
Our customer: CMF Ltd., Feltham Middlesex
Photo: © Elefant Gratings Ltd.