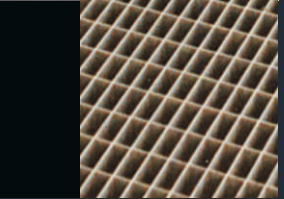
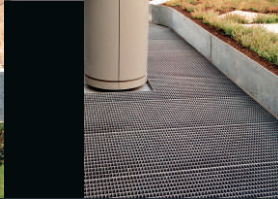
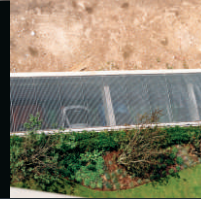




Guinness HQ, England



Projekt:	Guinness HQ, Park Royal London, England
Arkitekt:	RHWL
Leveringsår:	2002
Riste m ² :	Ca. 230 m ²
Formål:	Ventilation over parkeringskælder
Riste type:	Type NP
Materiale:	Stål 37
Overfladebehandling:	Galvaniseret
Maske:	Type 1: 25 x 50 mm Type 2: 30 x 60 mm
Ribber:	Type 1: 30 x 2 mm bæreribbe Type 2: 60 x 2 mm bæreribbe 30 x 2 mm styreribbe
Kantstål:	Type 1: 30 x 3 mm på 4 sider Type 2: 60 x 3 mm på 4 sider